



**Baerz Property**

FINDERS & ADVISORS  
INTERNATIONAL

**Lisboa**

Portugal

**€5.900.000**



**Baerz Property**  
FINDERS & ADVISORS  
INTERNATIONAL



**Baerz Property Finders & Advisors**

Buganvília Plaza 1, Quinta do Lago

8135-024 Almancil

Headquarters South Europe

+351 911 98 38 78

[richard@baerzproperty.com](mailto:richard@baerzproperty.com)





by

---

Baerz & Co

---

LUXURY HOMES

---



by  
**Baerz & Co**  
LUXURY HOMES



by  
**Baerz & Co**  
LUXURY HOMES

---

## Lisboa

---

-

<b>VRAAGPRIJS</b>	<b>€5.900.000</b>
-------------------	-------------------

Status

---

Aanvaarding

---

### **BOUW**

Soort woonhuis	Apartment,
----------------	------------

---

Soort bouw	existing construction
------------	-----------------------

---

Bouwjaar

---

Bijzonderheden

---

### **MATEN EN LIGGING**

Woonoppervlakte	473 m <sup>2</sup>
-----------------	--------------------

---

Ligging

---



**Baerz Property Finders & Advisors**

Buganvília Plaza 1, Quinta do Lago  
8135-024 Almancil

Headquarters South Europe  
+351 911 98 38 78  
richard@baerzproperty.com







---

## Lisboa

---

-

### INDELING

---

Aantal slaapkamers	3
Aantal badkamers	5

---

### OMSCHRIJVING

Exceptional luxury PENTHOUSE T3+3 in Chiado, terrace with extraordinary panoramic views of the city of Lisbon and the Tagus.

General features:

FLOOR 0

Office;

2 Suites;

1 Master Suite.

Floor 1

Room with window to magnificent terrace with stunning view;

Dining house;

Hall, hall.

Kitchen;

Social bathroom;

1 suite;

3 double parking spaces (6x);

Air Conditioning;



---

## Lisboa

---

-

2 Collections.

Energy Rating: Exempt

#ref:DÚP\_6391



by

---

Baerz & Co

---

LUXURY HOMES

---







by

---

Baerz & Co

---

LUXURY HOMES

---





by

Baerz & Co

LUXURY HOMES

A photograph of a modern, high-end interior space. The scene is dominated by a large, light-colored marble countertop with a prominent veining pattern. In the foreground, a white, tufted sofa is partially visible. The background shows a hallway with glass railings supported by thin metal poles, and a glimpse of another room with warm lighting. The overall aesthetic is clean, minimalist, and luxurious.

by

---

Baerz & Co

---

LUXURY HOMES

---







by

---

# Baerz & Co

---

LUXURY HOMES

---

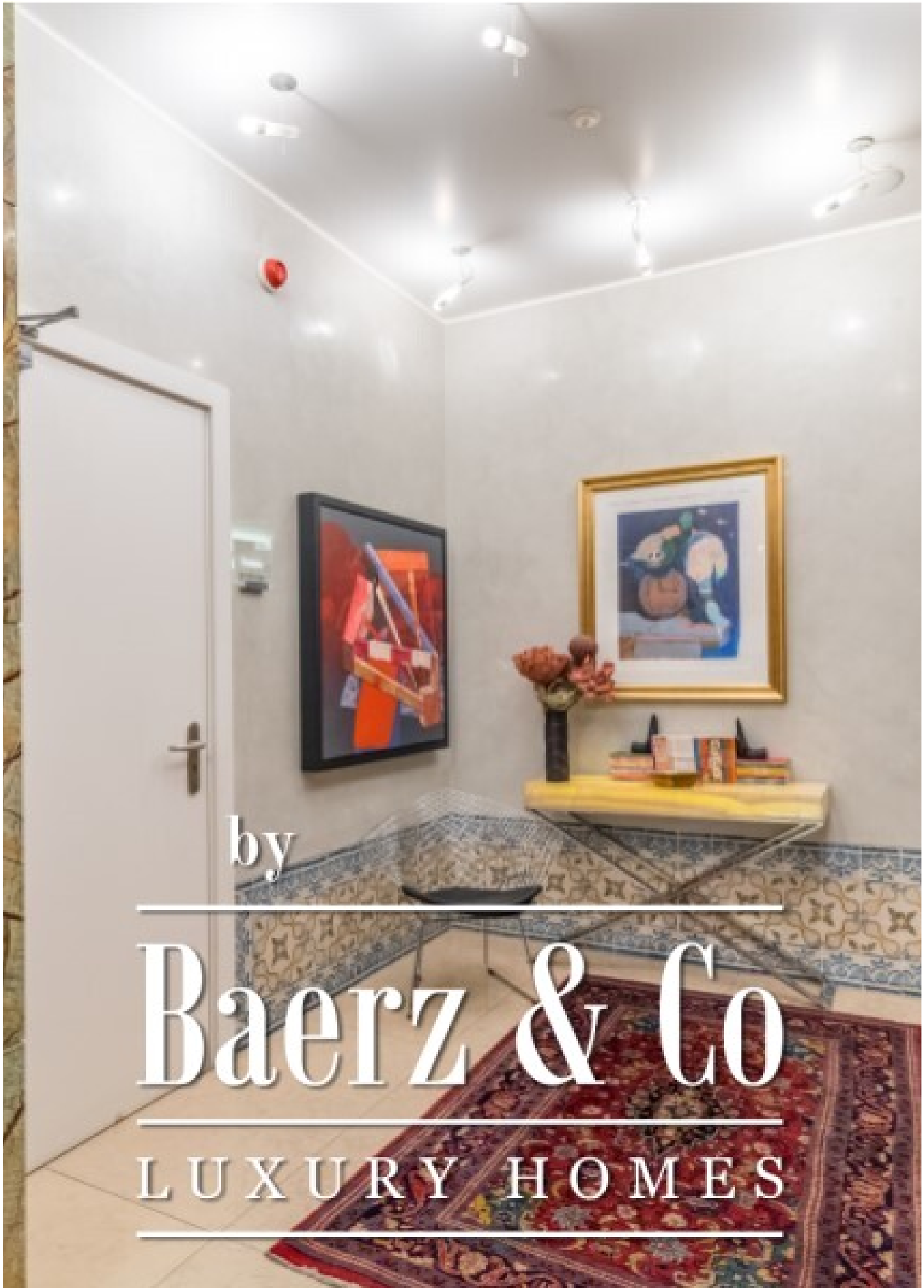




by  
**Baerz & Co**  
LUXURY HOMES



by  
**Baerz & Co**  
LUXURY HOMES



by

---

# Baerz & Co

---

LUXURY HOMES

---



by

---

# Baerz & Co

---

LUXURY HOMES

---



by

---

# Baerz & Co

---

LUXURY HOMES

---



by

---

Baerz & Co

---

LUXURY HOMES

---





by

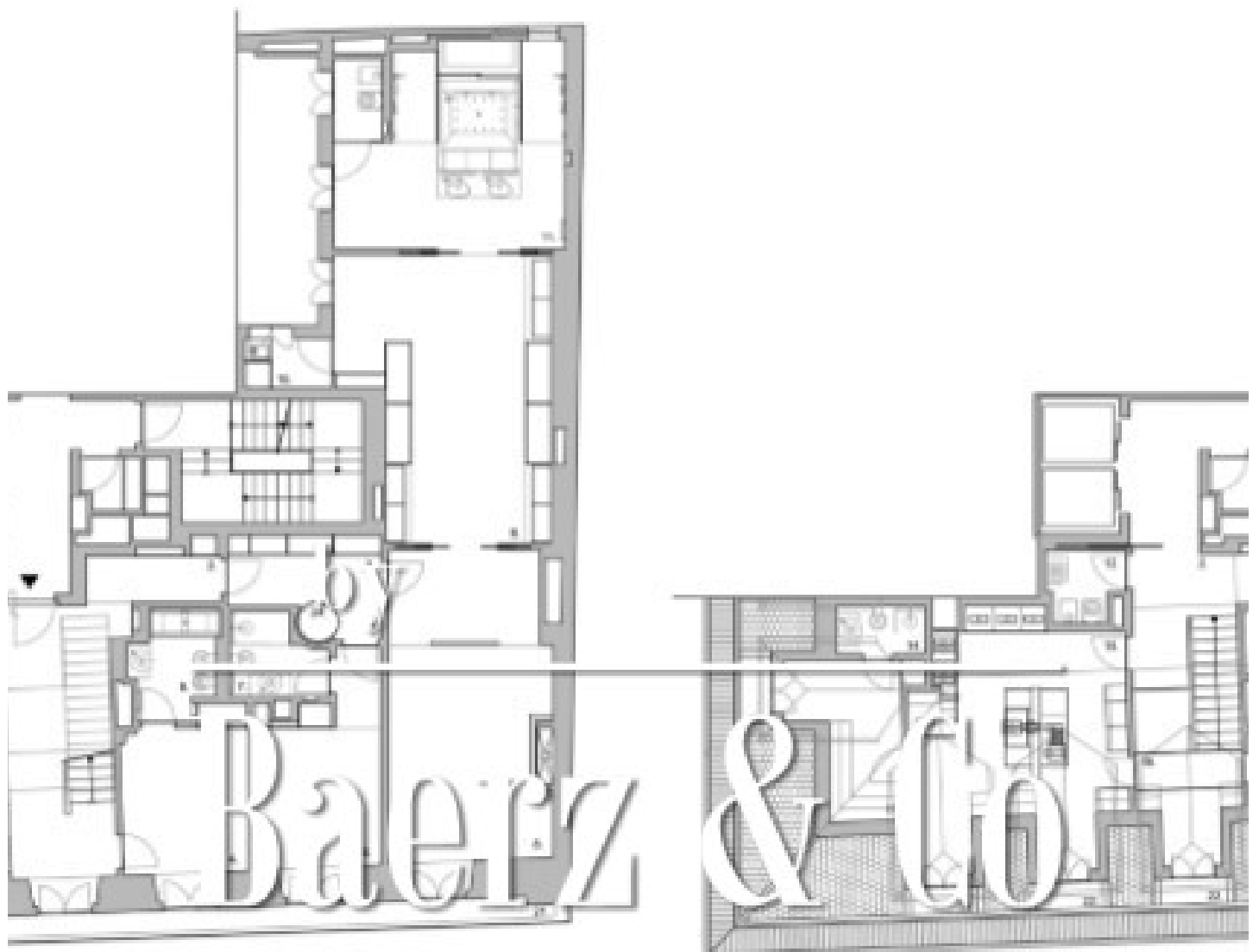
---

Baerz & Co

---

LUXURY HOMES

---



LUXURY HOMES

---

---

**BAERZ PROPERTY FINDERS & ADVISORS**

Buganvília Plaza 1, Quinta do Lago  
8135-024 Almancil  
Portugal

Headquarters South Europe  
+351 911 98 38 78  
richard@baerzproperty.com

